

WETLAND THRESHOLD & RESTORATION



Taylor Bell
Mitigation Program Manager
Regulatory Division
New England District
21 March 2023



**US Army Corps
of Engineers**®



MARCH 28 PUBLIC NOTICE

- Permanent wetland impacts greater than 5,000 will require pre-construction notification
- Permanent wetland impacts greater than 5,000 square feet will require compensatory mitigation
- Change from 15,000 to 5,000 square feet
- Effective 30 days from Public Notice



WHY IN THE MIDDLE OF THE GENERAL PERMIT?



Permanent GP Impacts & Mitigation Non-Tidal Wetlands in New England States FY 2017-2022 (Acres)

State	**Land Area (acres)	Discharges >5,000 SF (UA)	Discharges 5000-15000 SF (UA)	Discharges >5000 SF No CM	Discharges 5000-15000 SF No CM (acres)	Total Discharges No CM	Total Discharges UA (acres)
Connecticut*	3,099,116.8 (7.7%)	10.5	2.9	4.1	0.79 (0.8%)	12	18.8 (5.8%)
Maine*	19,740,864 (49.2%)	153.1	83.4	84.9	75 (77.6%)	110.7	180.7 (55.9%)
Massachusetts*	4,992,614.4 (12.4%)	12.3	4.41	6.6	2.1 (2.2%)	12.9	19 (5.88%)
New Hamp*	5,730,400 (14.3%)	50.4	16.2	22.4	12.9 (0.9%)	45.9	74.7 (23.1%)
Rhode Island*	661,689.6 (1.6%)	0.91	0.91	0.91	0.91 (13.3%)	1.7	1.7 (0.53%)
Vermont*	5,899,168 (14.7%)	16.5	7	6.1	5 (5.2%)	15.4	28.2 (8.73%)

Table 1. Permanent General Permit Discharges in Freshwater Wetlands per single & complete project by State (USACE ORM II data 9/27/2017-9/27/2022)

*Values expressed in ACRES **2020 U.S. Census Bureau Data CM: Compensatory Mitigation UA: Unavoided



WHY PART II



Avoidance Frequency Permanent Non-Tidal Wetland Impacts in New England States (General Permits) FY 2017-2022

State	Total Actions*	Compensatory Mitigation Threshold	Discharges 0-5,000 SF*	Discharges 5,000-15,000 SF*	Discharges >15,000 SF*	Average discharge size
Connecticut	320	5,000 SF	292 (91.3%)	14 (4.4%)	14 (4.4%)	2,556 SF
Maine	1189	15,000 SF	734 (61.7%)	360 (30.3%)	95 (8%)	6,619 SF
Massachusetts	234	5,000 SF	203 (86.8%)	20 (8.5%)	11 (4.7%)	3,528 SF
New Hamp	905	3,000/10,000 SF	788 (87.1%)	89 (9.8%)	38 (4.2%)	3,596 SF
Rhode Island	31	5,000 SF	25 (80.6%)	6 (19.4%)	0	2,400 SF
Vermont	379	5,000 SF	323 (85.2%)	38 (10%)	17 (4.5%)	3,242 SF

Table 2. Permanent General Permit Discharges in Freshwater Wetlands per single & complete project by State (USACE ORM II data 9/27/2017-9/27/2022)

*Values expressed in number of single & complete ACTIONS unless otherwise noted



QUESTIONS PART 1



- March 28 Public Notice for change in Mitigation Thresholds for Wetlands
- 30-day grace period prior to finalization
- On April 28 or 30-day post Public Notice, the 5,000 square feet will become effective on all applications received AFTER the 28'th.

RESTORATION

Maine Natural Resource Conservation Program



US Army Corps
of Engineers®

“NO NET LOSS”

Federal Programmatic Goal

- Balance wetland acreage losses with acreage gains
- At minimum, total wetland acreage should remain constant or increase

2008 Federal Mitigation Rule

- Watershed approach
- Provided a framework approach to success
- 12 Elements of a mitigation plan

Moved toward replacement of functions that were lost

“the Board of Environmental Protection supports the nation-wide goal of no net loss of wetland functions and values....” Ch.310



US Army Corps
of Engineers ©

MAINE NATURAL RESOURCE CONSERVATION PROGRAM VIA TNC

Compensatory Mitigation Provider

- 3rd Party Mitigation Provider
- Offset Impacts to Federal and State Waters
- Federal Preference to Permittee Responsible Mitigation
- Governed by a Corps and State approved Instrument
- Internal Interagency Review Team
- Federal Interagency Review Team
- Utilizes a Request for Proposals



US Army Corps
of Engineers®

Mitigation Rule Definitions

Restoration means the manipulation of the physical, chemical, or biological characteristics of a site with the goal of **returning** natural/historic functions to a former or degraded aquatic resource.

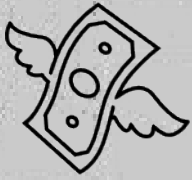
Rehabilitation means the manipulation of the physical, chemical, or biological characteristics of a site with the goal of **repairing** natural/historic functions to a degraded aquatic resource.

Enhancement means the manipulation of the physical, chemical, or biological characteristics of an aquatic resource to **heighten, intensify, or improve** a specific aquatic resource function(s).



U.S. ARMY

US Army Corps
of Engineers®



WHAT CAN ILF FUNDS BE USED FOR



Selection

Design

Acquisition

Implementation

- Any phase 1's required as part of 106 process
- Financial assurances

Management of compensatory mitigation projects

- 5 year and long-term management

Projects **may/will** take time

MUST be part of a complete budget(cradle to grave)



U.S. ARMY



US Army Corps
of Engineers®

WHAT ILF FUNDS CAN'T PAY FOR

Standalone development of plans, permits or suitability determinations.

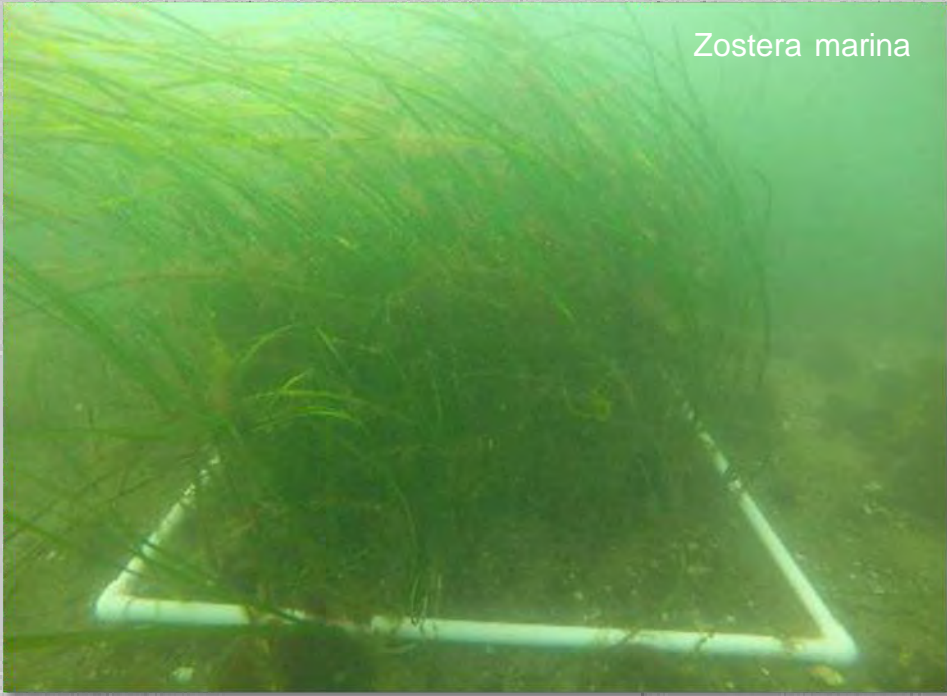
Risk goes both ways:

- Can't fund plan development unless we have something to show.
- Involves some risk from potential applicants that restoration can be successful and is doable.
- Type of work happens across the nation; this is how almost every other mitigation program operates.

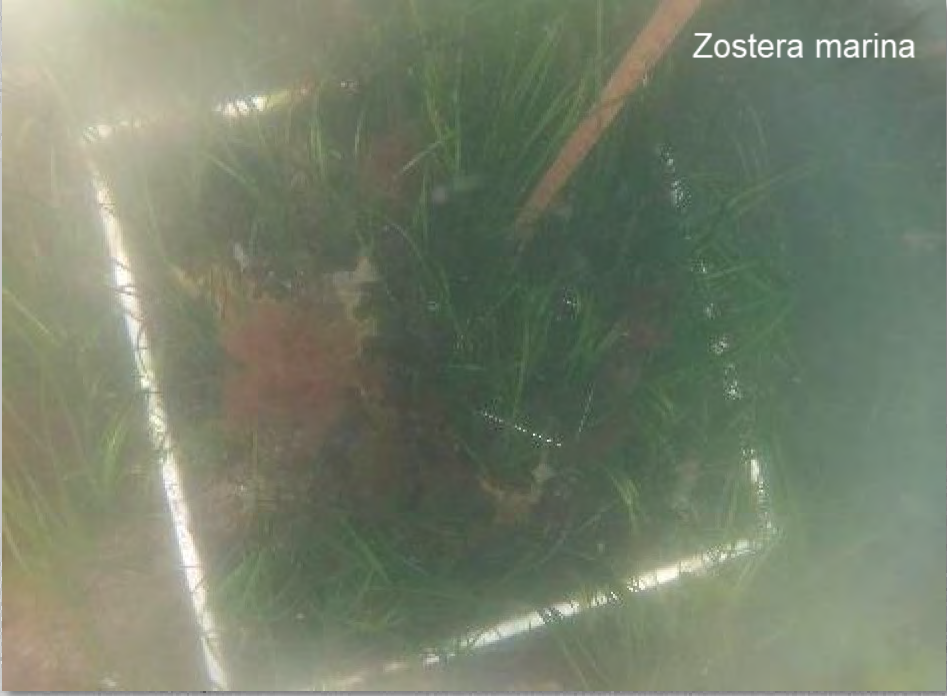
MNRCP/TNC may start utilizing GIS data to overlay historically classified wetlands that have been developed for other uses, i.e. farmland, pastures, and prior converted wetland.



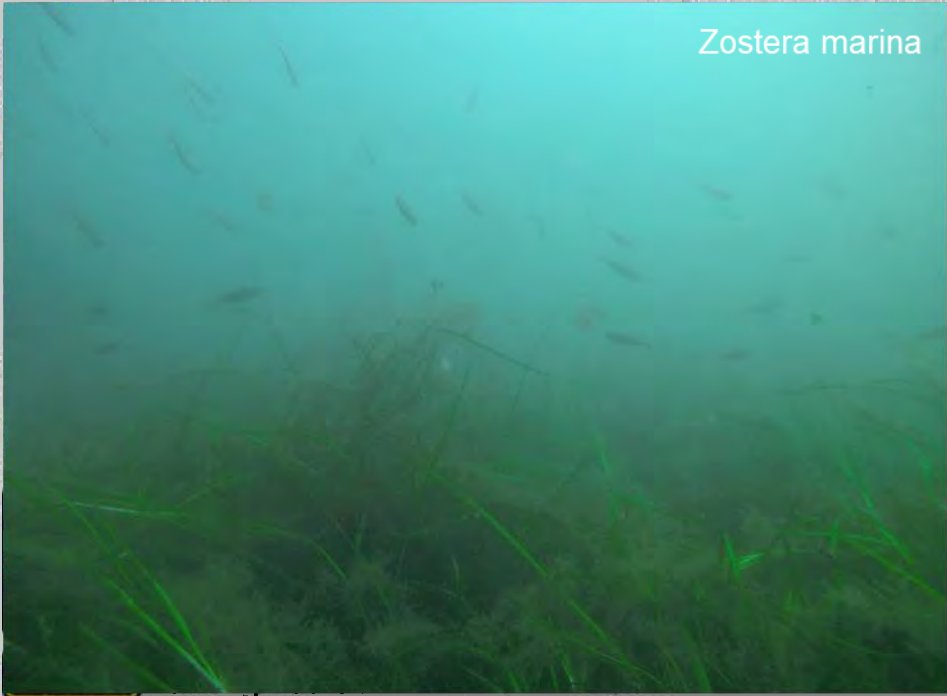
US Army Corps
of Engineers®



Zostera marina



Zostera marina



Zostera marina



Zostera marina



Before dam removal

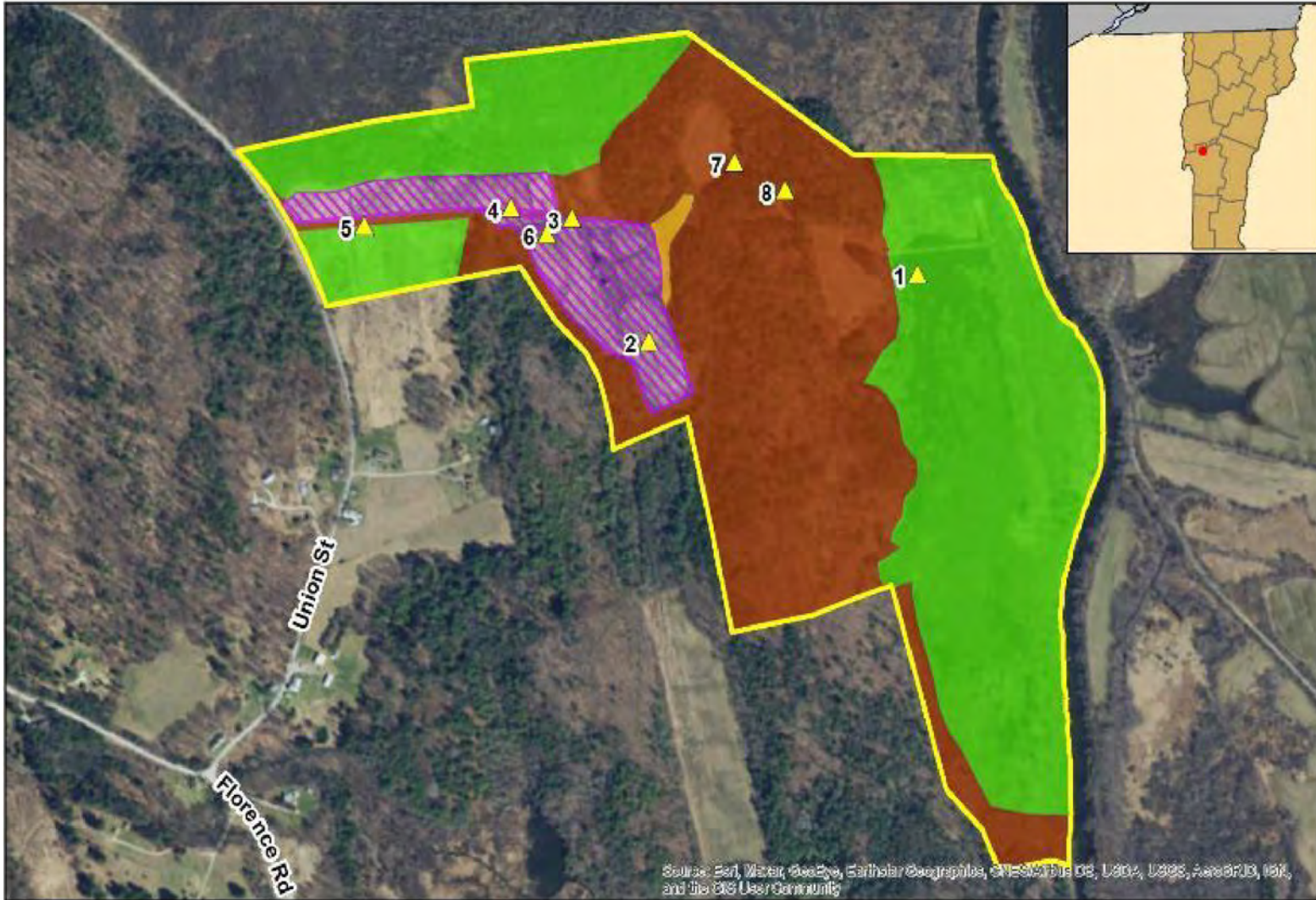


Immediately after dam removal

CHOP CHAQUE BOG RESTORATION, MASHPEE MA



US Army Corps
of Engineers®



Source: Soil, Water, Geology, Earthstar Geographics, ENR/AR/USGS, USGS, USGS, Aerial/US, USGS, and the GIS User Community

▲ Photopoints

Property Boundary 169.12 acres +/-

1& Preservation 80.22 acres +/-

00, Reestablishment or Rehab 14.5 acres +/-

III, Upland Buffer 74.12 acres +/-

Upland Buffer Rehab 0.86 acres +/-



WHAT ABOUT PRESERVATION?

- Where preservation is used to provide compensatory mitigation, to the extent appropriate and practicable, preservation shall be done in conjunction with aquatic resource restoration, establishment, and/or enhancement activities.
- Difficult to mitigate resources(VP,IWWH)



US Army Corps
of Engineers ©

QUESTIONS?

Taylor Bell

Mitigation Program Manager

978-318-8952

Taylor.m.bell@usace.army.mil



U.S. ARMY



US Army Corps
of Engineers®